

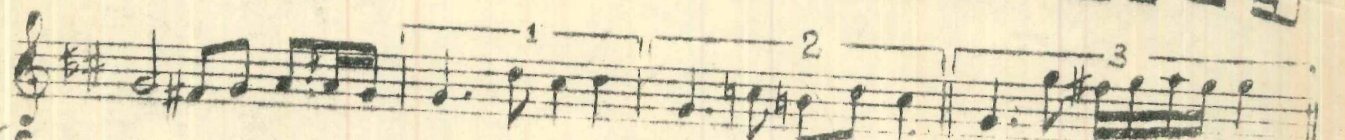
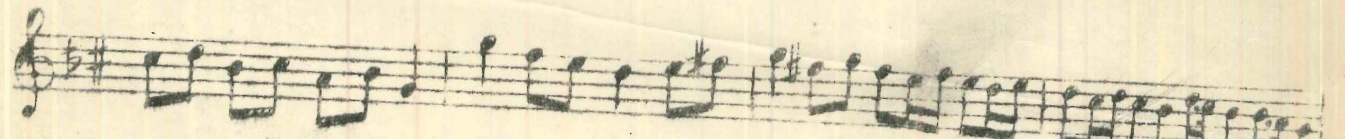
لو

(I)

Handwritten musical notation

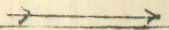
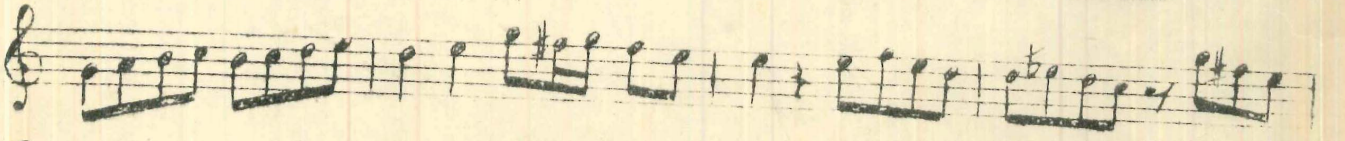
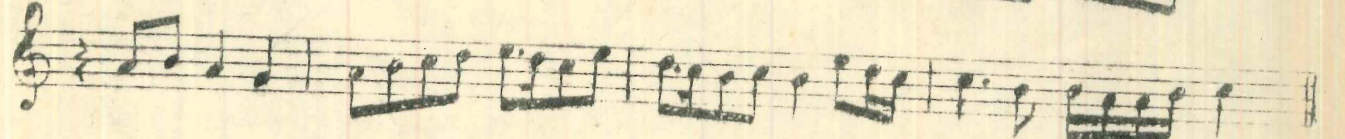


Taslim.



Hâlle

Dördüncü haneye geçmek için



Nikriz Pesrevinin devamı

3. Hane.

Handwritten musical notation for the 3rd Hane of the Nikriz Pesrevi. It consists of four staves of music in G major (one sharp) and 2/4 time. The first staff ends with a fermata and a '2' above it. The second staff continues the melody. The third staff has a double bar line and continues. The fourth staff ends with a fermata and a '3' above it.

4. Hane

Handwritten musical notation for the 4th Hane of the Nikriz Pesrevi. It consists of four staves of music in G major (one sharp) and 2/4 time. The first staff starts with a '4' above it. The second staff continues the melody. The third staff continues. The fourth staff ends with a fermata and a '2' below it. To the right of the fourth staff is a box labeled 'Karar' containing a single note with a fermata.